

# PROSHORE

## UNDERGROUND SHORING AND SHIELDING PRODUCTS



**MULTI SHORING SYSTEM**



**PNEUMATIC SHORING STRUTS**



**SINGLE WALL  
TRENCH SHIELDS**

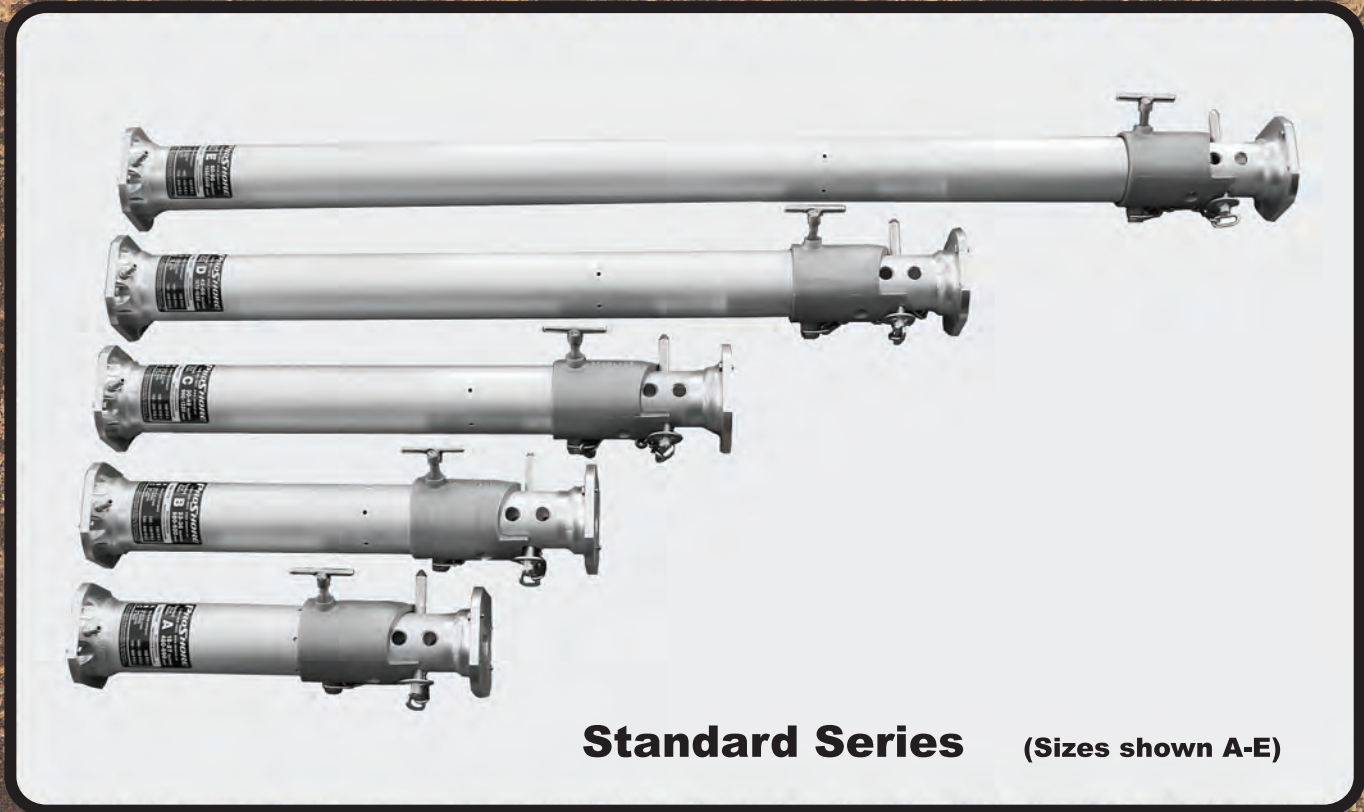


**MODULAR PANEL SYSTEM**



**DOUBLE WALL  
TRENCH SHIELDS**

*ProShore pneumatic shoring struts are designed and engineered to be one of the safest and most versatile means of shoring an excavation. Made with high tensile strength aluminum alloy the strut is lightweight and strong, yet able to withstand the toughest job site conditions. ProShore struts are used in conjunction with our multi shoring panels or with contractor supplied plywood and 2"x 10" plank uprights.*



**Standard Series** (Sizes shown A-E)

Series		A	B	C	D	E	F	G
Size Limits	inches	18-27	23-36	30-48	42-66	60-96	90-120	114-144
	cm	46-69	58-92	96-122	107-168	152-244	229-305	290-366
Weight	lbs	12	14	17	22	30	35	40
	kgs	5.54	6.4	7.7	10	13.6	15.9	18

- **Lightweight aluminum alloy construction**
- **Environmentally safe - no messy fluids**
- **Fast and safe installation**
- **7 sizes ranging from 18" to 144"**
- **Versatile - adapts to all trench types**
- **Professional engineer certified**
- **Positive locking - no chance of creep back due to loss of pressure**



*ProShore manufactures standard and swivel end struts to adapt to any trench wall. The standard series has a fixed end for use with near vertical walled trenches. The swivel series has pivoting ends which rotate 15 degrees in any direction to accommodate sloped or less than uniform trenches. When the ProShore strut has been pressurized and the positive locking pin is set there is no need to keep the air assembly connected. The strut is now fixed mechanically, maintaining pressure against the trench walls. ProShore struts use Co2 or compressed air which makes it environmentally safe. There is no chance of messy fluid leaks or freezing in colder climates.*



**Swivel Series** (Sizes shown A-E)

Series		SA	SB	SC	SD	SE	SF	SG
Size Limits	inches	21-29	26-38	33-50	45-68	63-98	93-122	117-146
	cm	53-74	66-97	84-127	114-173	160-249	236-310	297-371
Weight	lbs	14	16	19	24	32	37	42
	kgs	6.4	7.3	8.6	10.9	14.5	16.8	19

*The ProShore air supply provides a quick, portable method of inflating our pneumatic shoring struts.*

*It consists of a regulator, 50 feet of hose, a self dumping hand valve, and a quick connect coupler. An optional cart is available to accommodate two 20lb Co2 bottles and the hose assembly.*

*This combination makes a lightweight portable unit that is easy to handle on the job site.*



The ProShore multi shoring system is the quickest and safest way of shoring trenches with existing utilities and crossings. The multi shoring system can be lowered in as a complete unit. When multiple sets are used in a trench it is easy to remove the trailing set and move it to the front for uninterrupted production. The system is made up of ProShore spot rail pads and Finn Form panels and used with ProShore standard series shoring struts. Unlike standard sheets of plywood, the Finn Form panels will not swell when exposed to water or muddy jobsite conditions. This system is stronger, more durable and capable of far greater depths than the older, conventional 2"x 10" plank uprights and plywood.



Proudly Made in Canada

Item	Description	Number of Struts Required	Weight
PSMS-6	4'X6' Panel System includes: 2 sheets - Finn Form w/steel corners 4 - 18" rails w/quick release pins, 2-steel handles	2	192 lbs (87 kg)
PSMS-8	4'X8' Panel System includes: 2 sheets - Finn Form w/steel corners 4 - 18" rails w/quick release pins, 2-steel handles	2	232 lbs (105 kg)
PSMS-10	4'X10' Panel System includes: 2 sheets - Finn Form w/steel corners 6 - 18" rails w/quick release pins, 2-steel handles	3	285 lbs (129 kg)
PSMS-12	4'X12' Panel System includes: 2 sheets - Finn Form w/steel corners 6 - 18" rails w/quick release pins, 2-steel handles	3	336 lbs (153 kg)

The MPS modular panel system is a lightweight aluminum shoring system that can be made into a 2,3 or 4 sided trench shield in minutes. Easily transported in a pickup truck. Light enough to be assembled by hand and moved around the jobsite by a backhoe or mini excavator.

## Modular Panel Series Features

- 2' stackable, smooth walled panels are available in lengths of 2' - 12' long.
- Tongue and groove construction with a 2-3/4" wall thickness and two gussets in the middle of each panel assures you of the strongest aluminum panel on the market.
- All panels are foam filled to keep dirt and moisture out.
- Optional stack kits, wheel kits and legs are available.
- The MPS delivers an outstanding open working area between the spreaders or end panels making pipe laying jobs easy.
- Adjustable or screw type spreaders are available in a variety of lengths.
- Built in Heavy Duty Lift Lugs come standard on all corner posts.
- Professional engineer certified.



2, 3, or 4 Sided Box Depth Chart  
Maximum clearance to bottom spreader or panel- 36"

Panel Length Ft(m)	A Ft(m)	B Ft(m)	C Ft(m)
2 (0.6)	20 (6.1)	20 (6.1)	20 (6.1)
3 (0.9)	20 (6.1)	20 (6.1)	20 (6.1)
4 (1.2)	20 (6.1)	20 (6.1)	20 (6.1)
5 (1.5)	20 (6.1)	20 (6.1)	20 (6.1)
6 (1.8)	20 (6.1)	20 (6.1)	20 (6.1)
7 (2.1)	20 (6.1)	20 (6.1)	20 (6.1)
8 (2.4)	20 (6.1)	20 (6.1)	18 (5.5)
10 (3.0)	20 (6.1)	16 (4.9)	12 (3.7)
12 (3.6)	20 (6.1)	11 (3.4)	8 (2.4)

### Adjustable Spreader

Model	Weight LBS (KG)	Length Ft. (m)
MPS-AS18	24 (11)	1.5' - 2.5' (0.4 - 0.7)
MPS-AS23	30 (13.6)	2' - 3' (0.6 - 0.9)
MPS-AS35	42 (19)	3' - 5' (0.9 - 1.5)
MPS-AS58	72 (32.6)	5' - 8' (1.5 - 2.4)

### Screw Jack Spreaders

Model	Weight LBS (KG)	Length Ft. (m)
MPS-SJ2	24 (11)	2'-3' (0.6 - 0.9)
MPS-SJ2	35 (16)	3'-5' (0.9 - 1.5)
MPS-SJ5	46 (21)	5'-7' (1.5 - 2.1)

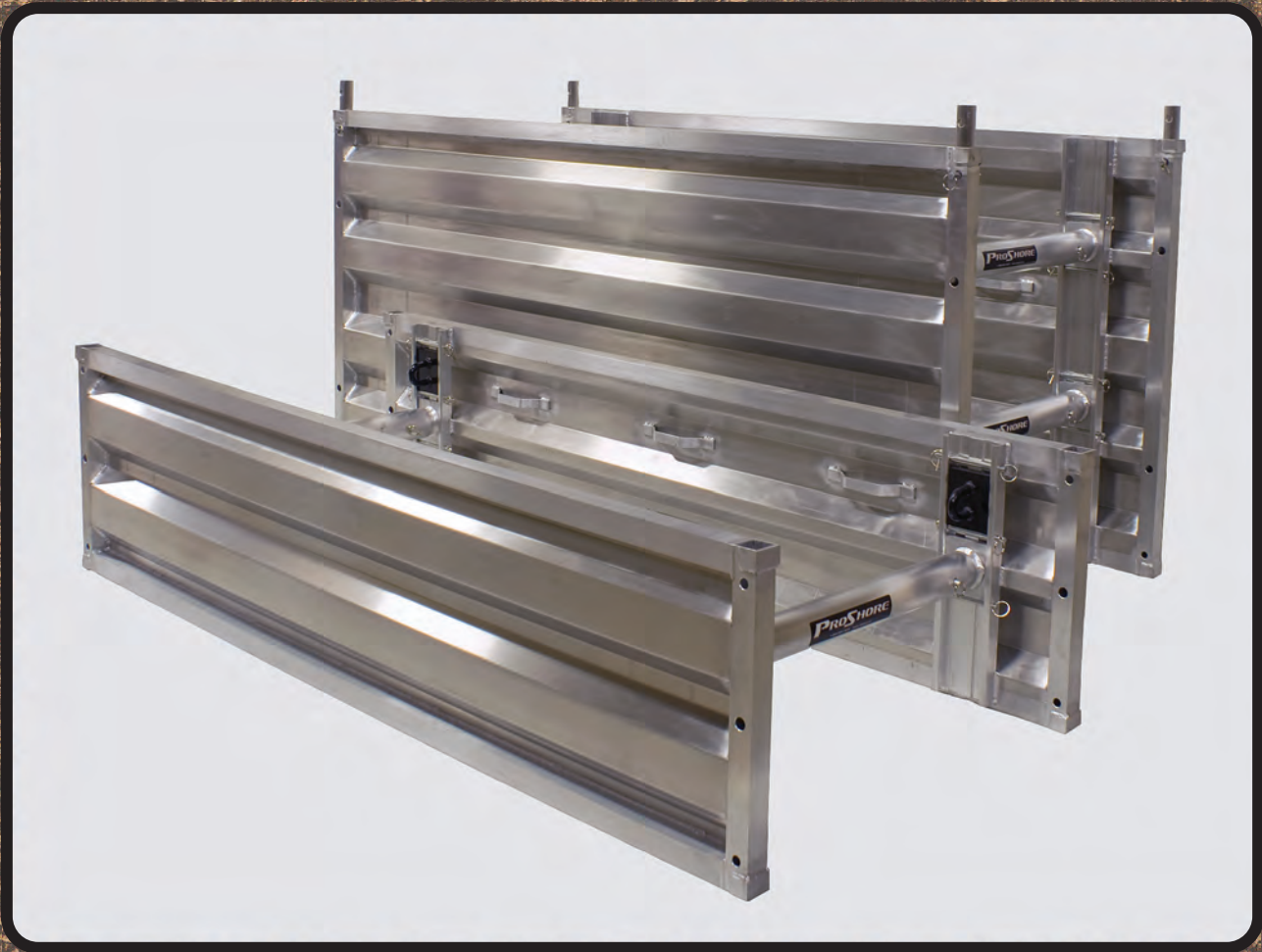
### Corner Post with Lift Point


Model	Weight LBS (KG)	Length Ft. (m)
MPS-2EP	18 (8)	2 (0.6)
MPS-4EP	36 (16)	4 (1.2)
MPS-6EP	54 (24.5)	6 (1.8)
MPS-SEP	72 (32.5)	8 (2.4)
MPS-10EP	90 (40.8)	10 (3)



# PROSHORE Single Wall Trench Shields

*ProShore single wall trench shields provide a light-weight adaptable shoring solution for trench depths of up to 12' in C-60 soils. The single wall trench shields are professionally engineered to have a large open working area. These shields come in 2' and 4' high sections that are stackable. They can be easily transported in a pickup truck or van. They are light enough to be assembled by hand and moved by a mini excavator or backhoe. This makes them a great choice for even the tightest job site conditions.*



 Proudly Made in Canada

Panel Length	Open Working Area Between Spreaders	Weight		Pipe Clearance	
		2' High (0.6 m)	4' High (1.2 m)	2' High (0.6 m)	4' High (1.2 m)
4' (1.2 m)	32" (0.8 m)	86 lbs (39 kg)	153 lbs (70 kg)	10" (0.25 m)	16" (0.4 m)
5' (1.5 m)	44" (1.1 m)	96 lbs (44 kg)	169 lbs (77 kg)	10" (0.25 m)	16" (0.4 m)
6' (1.8 m)	56" (1.4 m)	107 lbs (48 kg)	185 lbs (84 kg)	10" (0.25 m)	16" (0.4 m)
7' (2.1 m)	68" (1.7 m)	117 lbs (53 kg)	201 lbs (91 kg)	10" (0.25 m)	16" (0.4 m)
8' (2.4 m)	72" (1.8 m)	128 lbs (58 kg)	218 lbs (99 kg)	10" (0.25 m)	16" (0.4 m)
10' (3.0 m)	80" (2.0 m)	148 lbs (67 kg)	250 lbs (114 kg)	10" (0.25 m)	16" (0.4 m)
12' (3.6 m)	92" (2.3 m)	169 lbs (77 kg)	282 lbs (128 kg)	10" (0.25 m)	16" (0.4 m)

With options such as legs kits, wheel kits, stacking kits, and end shore panels the single wall trench shields can be used for almost any small tie-in or service. They can be assembled with adjustable aluminum spreaders or the pneumatic shoring struts, giving the option of having an even more versatile fleet.



**Leg kits:** Allows support of shields off the bottom of the trench at 12" or 24" heights. (sets of 4)



**Wheel kits:** Allows for shields to be rolled along the trench, eliminating the need to have a machine move the shield. (sets of 4)



**Steel lift lug:** The lift lugs slide into the rails of a shield, providing a secure lifting point. They can be transferred between shields so that multiple sets are not required. (sets of 4)



**Stack kits:** Allows for stacking of 2' and 4' shield sections to a maximum of 12' high. (sets of 4)



**Lifting sling:** A 4-leg 3/8" x 6' sling provides a safe certified means of installing and removing the shield.



**End shore panels:** Panels are pinned on to the ends of the shields to protect the worker on 3 or 4 sides. They come in 2' or 4' heights, and 3', 4', 5', and 6' lengths.

### Adjustable Aluminum Spreaders

Available in 5 sizes ranging from 19" to 97"

2' high shields require 2 spreaders

4' high shields require 4 spreaders



Part Number	Overall Length
SWTS-AAS1.5-2.5	19" - 31" (48-79 cm)
SWTS-AAS23	25" - 37" (63-94 cm)
SWTS-AAS34	31" - 49" (79-124 cm)
SWTS-AAS35	37" - 61" (94-155 cm)
SWTS-AAS58	61" - 97" (155-246 cm)

Custom sizes also available



Proudly Made in Canada

# PROSHORE

## Double Wall Trench Shield

The ProShore double wall trench shield is a heavy duty aluminum shield with smooth straight walls. Its heavy duty construction and use of adjustable steel spreaders allows for greater depth ratings, greater durability, more clear span area to work in, and higher pipe clearance than light-weight shields. The aluminum design makes it a great light-weight alternative to steel trench shields for job sites with smaller machines.



Proudly Made in Canada

Panel Length	Clear Span Between Spreaders	Weight				Pipe Clearance	
		4'High (1.2m)	6'High (1.8m)	8'High (2.4m)	10'High (3.0m)	4'High (1.2m)	6',8',10' High (1.8, 2.4, 3.0m)
6' (1.8m)	56" (1.4m)	420 lbs (190 kg)	600 lbs (272 kg)	780 lbs (345 kg)	900 lbs (409 kg)	12" (0.3m)	30" (0.76m)
8' (2.4m)	80" (2.0m)	510 lbs (231 kg)	730 lbs (331 kg)	960 lbs (436 kg)	1380 lbs (626 kg)	12" (0.3m)	30" (0.76m)
10' (3.0m)	104" (2.6m)	600 lbs (272 kg)	870 lbs (395 kg)	1140 lbs (518 kg)	1640 lbs (744 kg)	12" (0.3m)	30" (0.76m)
12' (3.6m)	128" (3.2m)	700 lbs (318 kg)	1010 lbs (459 kg)	1320 lbs (600 kg)	1840 lbs (835 kg)	12" (0.3m)	30" (0.76m)

*The VAC-SHIELD is an innovative new development. The design provides optimum personal protection. The lightweight design ensures ease of handling for quick installation and removal.*

### Vacuum Excavation Shoring System Features

- Made of rigid fibreglass.
- Easily stacks together with built in stacking lip.
- Each shield includes heavy-duty D-shaped lifting rings.
- Colour is a highly visible safety red.
- Vac-shield offers complete open working area.
- Very light-weight and easy to maneuver by hand, if needed.
- Ideal applications are: water service connections, valve box and rod repairs, utility locating, and utility repair.
- Available in 24" and 48" heights.
- Available in 42" and 48" diameters.
- Professional engineer certified.

Built in stacking lip and heavy-duty D-shaped lifting rings



### Vac-Shield Specifications

Diameter in(cm)	Height in(cm)	Weight lbs.(kg)	Wall Thickness in(cm)	Engineer Approved Depth Ft(m)
42 (107)	24 (60)	70 (32)	0.375 (1)	9(2.7)
42 (107)	48 (122)	135 (61)	0.375 (1)	9(2.7)
48(122)	24 (60)	90 (41)	0.375 (1)	9(2.7)
48(122)	48 (122)	180 (81)	0.375 (1)	9(2.7)

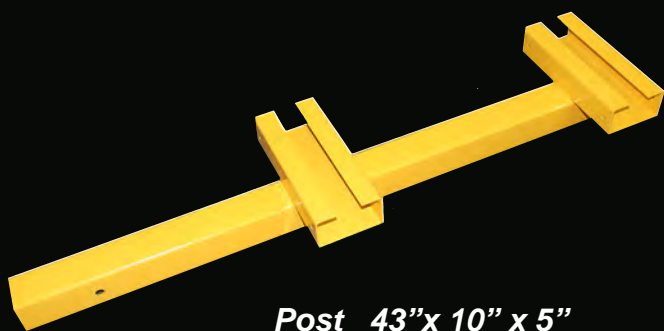
**The Vac-Shield provides a quick and easy means of securing a safe and productive environment for workers.**



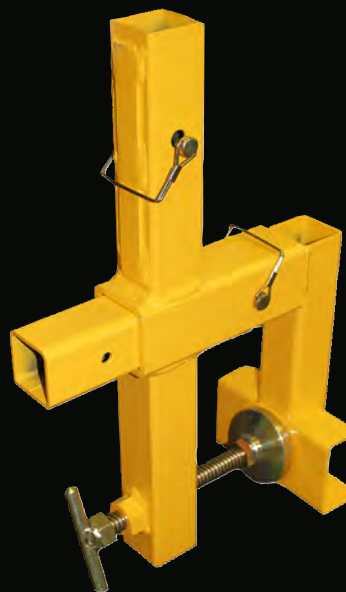
*The PRO SHORE Railing Post System is a unique guard rail device that enhances the safety factor for job site personnel. It serves as an extra precautionary measure providing temporary railings around any excavation or trench. The entire system can be installed quickly and easily on any Slide Rail or Trench Shield panel from 1" to 8" thick.*

### Railing Post Series Features

- 2 piece guard rail system
- Posts available for 2x4 or 2x6 lumber railings
- Adjustable saddle fits 1" to 8" size trench shield walls
- Heavy duty adjustable handle
- Safety yellow coating w/durable powder coat finish
- Supported by registered professional engineers document



**Post 43" x 10" x 5"**  
**- 22 lbs. (10 kg)**



**Saddle 12" x 6" x 19"**  
**- 17 lbs. (7.7 kg)**



### Steel Traffic Plates with Lock-N-Lift inserts

- 52,000 lbs. breakout capacity
- Quick release, positive lock connection
- Weld-in insert provides a well balanced lift
- Holes in all 4 corners provide anchor points
- D Lug cutouts for vertical lifting of road plates
- Custom sizes available



Plate Width	Plate Length	Plate Thickness	Weight	Maximum Trench Span	Minimum Plate Overlap	Maximum Trench Span	Minimum Plate Overlap
4'	8'	1"	1307 Lb	2'	1'	4'	2'
5'	10'	1"	2040 Lb	3'	1'	6'	2'
6'	12'	1"	2950 Lb	3'	1'	6'	2'
8'	10'	1"	3200 Lb	4'	2'	6'	2'
8"	12'	1"	3920 Lb	4'	2'	6'	3'
8'	16'	1"	5230 Lb	4'	2'	6'	5'
8'	20'	1"	6500 Lb	4'	2'	6'	5'

1. Traffic based on H20-44 (Single Tire/Plate). Having a uniform load of 640 Lb. per lineal foot on load lane.
2. Plates are to be uniformly supported and centered over the trench.
3. Trench walls under the plates shall be uniformly supported from top to bottom.
4. Plates should be anchored to prevent lateral movement.
5. Supporting surface on each side of the trench shall be smooth and hard (concrete, asphalt surfaces or equal).
6. Steel traffic plates shall be a minimum of one inch thick.
7. All specifications above are certified by a registered professional engineer.

# *PROSHORE*

[www.proshore.ca](http://www.proshore.ca)

1 888 882 1024